



PRODUCT INFORMATION
Materials-catalogue-2009

**VS Vereinigte
Spezialmöbelfabriken
GmbH & Co. KG**
97941 Tauberbischofsheim
Hochhäuser Straße 8
Tel: 09341-880
Fax: 09341-88107
vs@vs-moebel.de
www.vs-furniture.com

VS Furniture:
P.O. Box 1420
97934 Tauberbischofsheim
Germany
Phone: +49-9341-88888
Fax: +49-9341-88830
vsexport@vs-furniture.com
www.vs-furniture.com



VS-Distributors world-wide:

Africa:

Egypt
Canada
USA

Asia:

Bahrain
China
India
Japan
Kuwait
Oman
Qatar
Russia
Saudi Arabia
South Korea
Singapore
United Arab Emirates

Australia:

Australia
New Zealand

Europe:

Austria
Belgium
Denmark
Finland
France
Germany
Hungary
Ireland
Italy
Luxembourg
Norway
Portugal
Spain
Sweden
Switzerland
The Netherlands
United Kingdom

VS is one of the **leading school furniture manufacturers in Europe**. In more than a century of company history, VS has made many significant contributions to the development of school furniture. As a **complete supplier** with a wide range of products, we offer comprehensive furnishing solutions from a single source.

VS distinguishes itself by offering products with exceptional **quality, function and service**. You will benefit from VS' highly specialised sales partners who will answer all of your questions personally, completely and support you locally.

In addition to its excellent products, VS also offers a wide range of **services** such as planning, project management and customer service. VS has a global network of dealers and references which clearly emphasise its market leadership.

Colour Combinations 2009 Collection 4

Lists of materials:

Metal colours	12
Wood stains	14
Plastic colours	15
LIGNOpal top surfaces	16
Linoleum top surfaces	19
Veneer top surfaces	20
Fabrics	21
Board surfaces	38



THE COLOUR SYSTEM
Plastic shells and steel-frame colours.

The bold colour emphases dominate in the combination of steel-tube frames and plastic seat shells. This goes well with a material like plastic. And what is particularly attractive: it also looks good in any possible combination.

	M7 Steel-frame chrome-plated 060	M1 Steel-frame deep red 036	deep green 037	deep blue 038	deep black 039	M2 Steel-frame arctic 059	anthracite 063	grey white 078
C1 Plastic shell black grey 073								
dolphin grey 078								
C2 Plastic shell yellow orange 026								
dark red 027								
dark green 028								
dark blue 029								



THE COLOUR SYSTEM
Wood shells and steel-frame colours.

Steel-tube frames and wood stains for the seat shells – simply combine them any way you want. With this patchwork the decisive colour emphasis always remains with the seat shell, while the frames hold back in their achromatic colour scheme.

	M7 Steel-frame chrome-plated 060	M1 Steel-frame deep red 036	deep green 037	deep blue 038	deep black 039	M2 Steel-frame arctic 059	anthracite 063	grey white 078
H1 Wood shell natural 010								
H2 Wood shell yellow orange 026								
dark red 027								
dark green 028								
dark blue 029								
light green 021								
light blue 022								
light grey 023								
brown 024								
black 011								

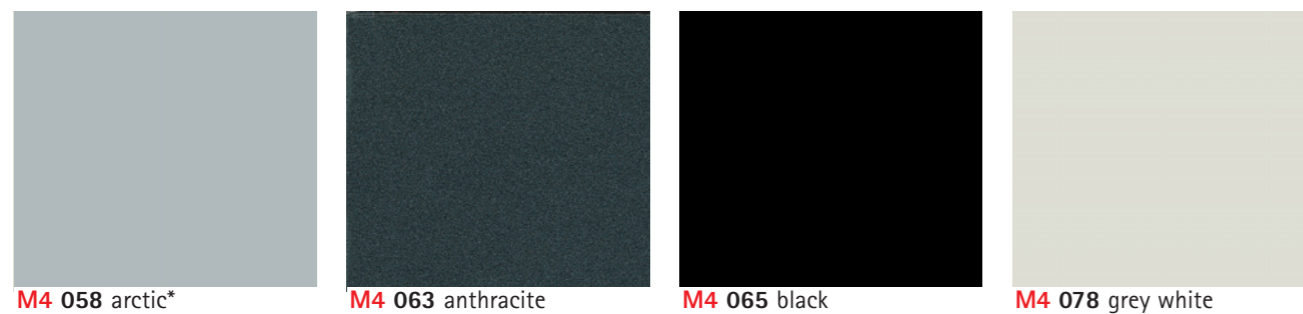
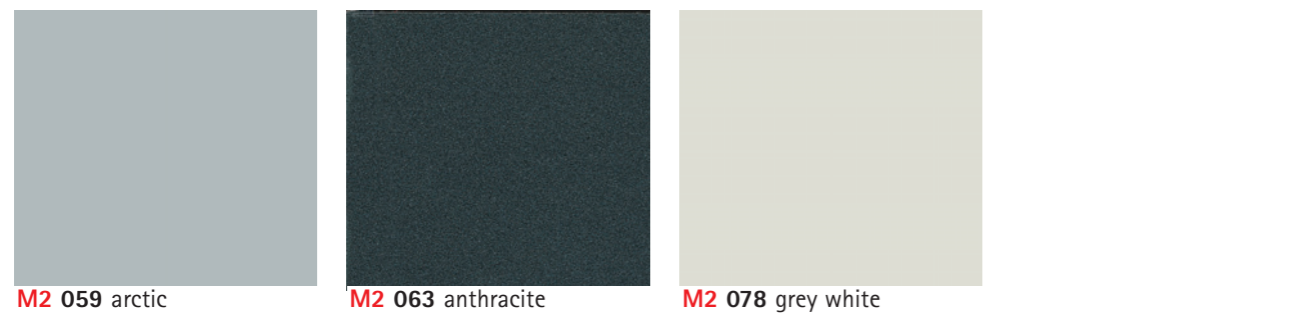
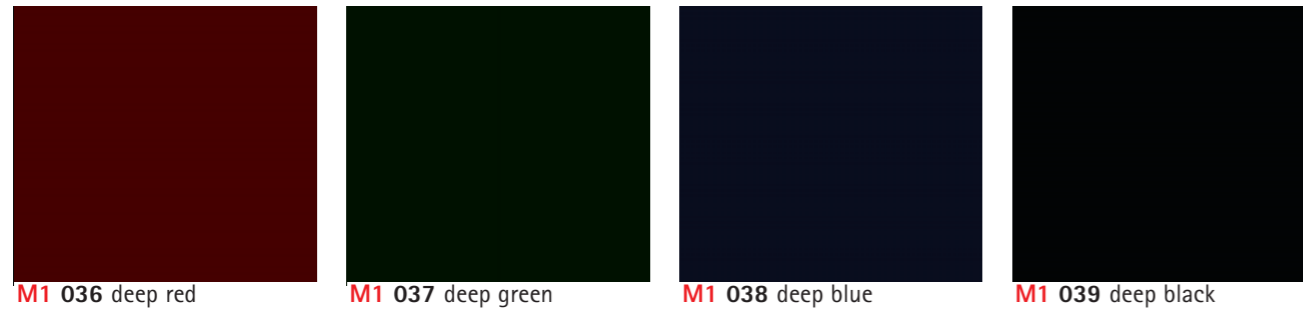


THE COLOUR SYSTEM
Steel-surface and steel-frame colours.

A universal colour concept does not stand still with the individual object. At VS we guarantee that steel frames of chairs also go very well at all times with other surrounding steel surfaces such as, for instance, mobile cabinets.

	M7 Steel-frame chrome-plated 060	M1 Steel-frame deep red 036	deep green 037	deep blue 038	deep black 039	M2 Steel-frame arctic 059	anthracite 063	grey white 078
M3 Steel-surface yellow orange 026								
dark red 027								
dark green 028								
dark blue 029								
M4 Steel-surface arctic* 058								
anthracite 063								
black 065								
grey white 078								

List of materials:

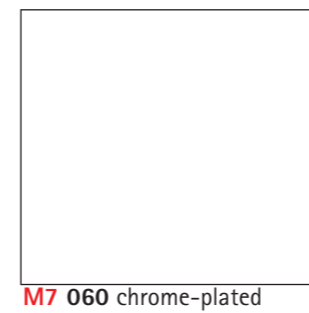
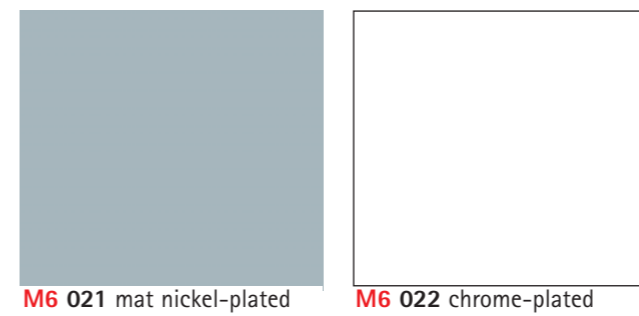
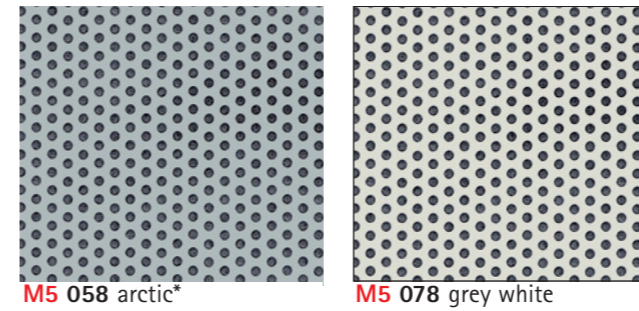


Mat-M1-4_MF_EN - 12.12.2008 - www.vs-furniture.com

MATERIALS**Metal colours, Group M1-M4.**

Metal parts. Steel and aluminium are mainly used in the manufacture of chairs and tables but also for racks. At VS, tubes as well as metal sheets for fronts are generally epoxy-resin powder-coated and available in various **metal colours**.

Important note. Material and colour charts produced by offset printing can deviate slightly from the original and the colours are not necessarily exactly true. The same applies to ink-jet or laser prints from PDF files.



Mat-M5-7_MF_EN - 12.12.2008 - www.vs-furniture.com

MATERIALS**Metal colours, Group M5-M7 (Chrome).**

Metal parts. Steel and aluminium are mainly used in the manufacture of chairs and tables but also for racks. At VS, tubes as well as metal sheets for fronts are generally epoxy-resin powder-coated. In addition to various **metal colours**, selected products can also be chrome-plated.

Important note. Material and colour charts produced by offset printing can deviate slightly from the original and the colours are not necessarily exactly true. The same applies to ink-jet or laser prints from PDF files.



H1 010 natural



H2 026 yellow orange



H2 027 dark red



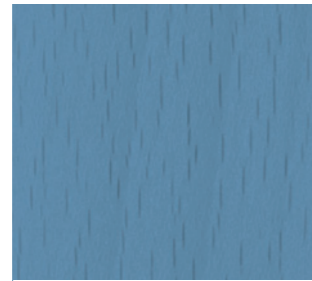
H2 028 dark green



H2 029 dark blue



H2 021 light green



H2 022 light blue



H2 023 light grey



H2 024 brown



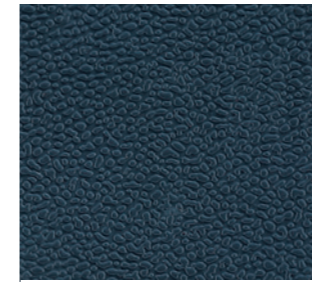
H2 011 black

Mat-H1-2_MF_EN - 12.12.2008 - www.vs-furniture.com

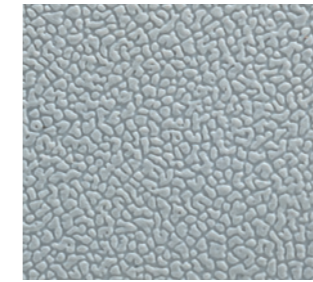
MATERIALS

Wood stain colours, Group H1, H2.

Solid wood parts. Solid wood parts are mainly used in the production of chairs and tables and at VS usually made from beech-wood. After cutting to size and sanding, the beech parts are either given several coats of clear varnish, stained and varnished or painted. Only water-based **wood stains and paints** are used.
Important note. Material and colour charts produced by offset printing can deviate slightly from the original and the colours are not necessarily exactly true. The same applies to ink-jet or laser prints from PDF files.



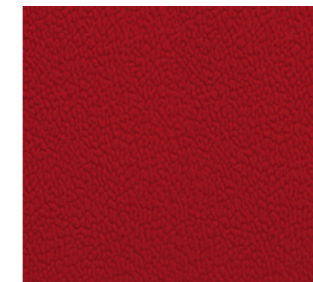
C1 073 black grey RAL 7021



C1 078 dolphin grey



C2 026 yellow orange



C2 027 dark red



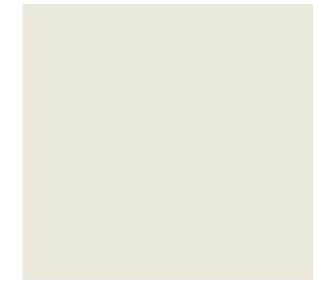
C2 028 dark green



C2 029 dark blue



C3 001 black grey RAL 7021



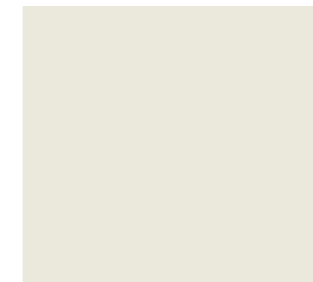
C3 002 grey white



C3 003 nevada beige



C4 011 black grey RAL 7021



C4 012 grey white



C4 013 nevada beige



C4 014 chrome-plated

Mat-C1-4_MF_EN - 12.12.2008 - www.vs-furniture.com

MATERIALS

Plastic colours, Group C1-C4.

Plastic parts. Plastic is used for small parts, e.g. handles and end elements, but also for seat shells. Seat shells on LuPoGlide and LuPoTurn chairs and the Pantan family are made from polypropylene. Polypropylene is a particularly impact- and scratch-resistant material. Various **plastic colours** are available to choose from.
Important note. Material and colour charts produced by offset printing can deviate slightly from the original and the colours are not necessarily exactly true. The same applies to ink-jet or laser prints from PDF files.



L1 027 natural beech laminate

L1 028 natural maple laminate

L1 031 grey white

L1 035 andes grey



L2 017 astral silver

L2 018 anthracite

L2 019 plain black

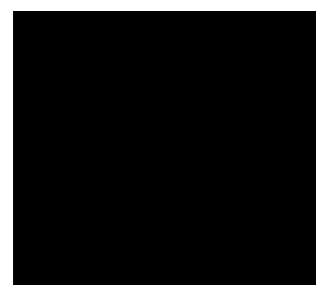


L3 027 natural beech laminate

L3 031 grey white

L3 017 astral silver

L3 018 anthracite



L3 019 plain black

Mat-L1-3_MF_EN - 12.12.2008 - www.vs-furniture.com

MATERIALS**LIGNOdur, Group L1 - LIGNOpal, Group L2, L3.**

Top surfaces. School table tops of **LIGNOdur** are exceptionally robust. They are made entirely from the sawdust and shavings left over from solid-wood processing and do not need any additional synthetic resin. The moulded top with rounded edges is coated with melamine resin. For the production of tables and panels for the bodies of clad furniture such as cupboards and filing cabinets, **LIGNOpal** three-layer quality fine chipboard E1 (DIN EN 312) is used. The panels are laminated on both sides with melamine resin.

Important note. Material and colour charts produced by offset printing can deviate slightly from the original and the colours are not necessarily exactly true. The same applies to ink-jet or laser prints from PDF files.



L4 027 natural beech laminate

L4 028 natural maple laminate

L4 031 grey white

L4 017 astral silver



L5 027 natural beech laminate

L5 031 grey white



L6 027 natural beech laminate

L6 028 natural maple laminate

L6 017 astral silver

L6 018 anthracite

Mat-L4-6_MF_EN - 12.12.2008 - www.vs-furniture.com

MATERIALS**LIGNOpal, Group L4-L6.**

Top surfaces. For the production of tables and panels for the bodies of clad furniture such as cupboards and filing cabinets, **LIGNOpal** three-layer quality fine chipboard E1 (DIN EN 312) is used. The panels are laminated on both sides with melamine resin.

Important note. Material and colour charts produced by offset printing can deviate slightly from the original and the colours are not necessarily exactly true. The same applies to ink-jet or laser prints from PDF files.



L7 046 red



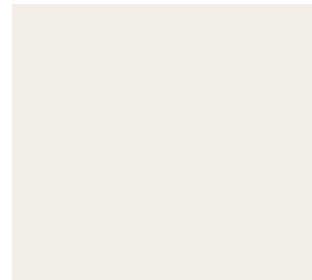
L7 047 blue



L7 048 yellow



L8 281 F37 aged beech



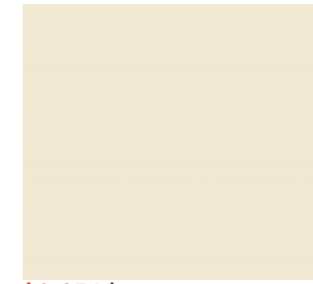
L8 344 U002 white



L8 345 U036 median grey



L9 051 red



L9 054 ivory



L9 057 dark grey



L9 058 black



L9 059 blue

Mat-L7-8_MF_EN - 12.12.2008 - www.vs-furniture.com

MATERIALS**LIGNOpal, Group L7, L8.**

Top surfaces. For the production of tables and panels for the bodies of clad furniture such as cupboards and filing cabinets, **LIGNOpal** three-layer quality fine chipboard E1 (DIN EN 312) is used. The panels are laminated on both sides with melamine resin.

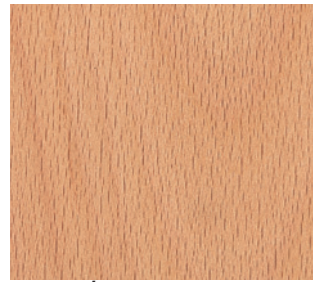
Important note. Material and colour charts produced by offset printing can deviate slightly from the original and the colours are not necessarily exactly true. The same applies to ink-jet or laser prints from PDF files.

Mat-L9_MF_EN - 12.12.2008 - www.vs-furniture.com

MATERIALS**Linoleum, Group L9.**

Top surfaces. Table tops can optionally be coated by the user with linoleum (Group L7). **Linoleum** is a natural product and has a warm and elastic surface. User marks are characteristic of the material.

Important note. Material and colour charts produced by offset printing can deviate slightly from the original and the colours are not necessarily exactly true. The same applies to ink-jet or laser prints from PDF files.



Fu 010/010 natural beech



Fu 010/011 black beech



Fu 011/010 maple (Canadian)



Fu 012/010 natural cherry



Fu 013/010 natural birch



Fu 014/010 natural ash



Fu 015/010 natural oak



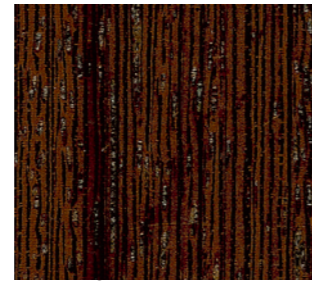
Fu 015/999 limed oak



Fu 016/010 pear natural wood



Fu 017/010 zebrano



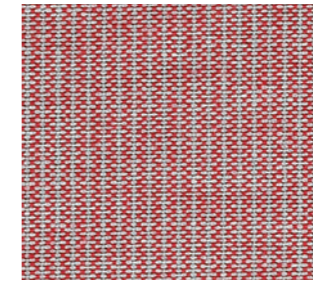
Fu 018/010 wengé



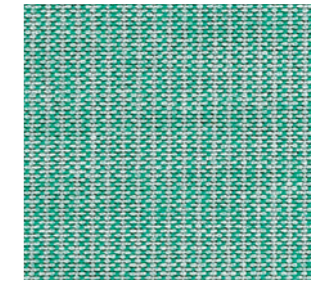
Fu 019/010 walnut



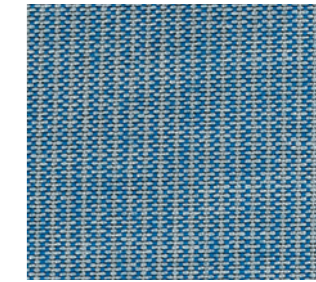
S15 177 - beige



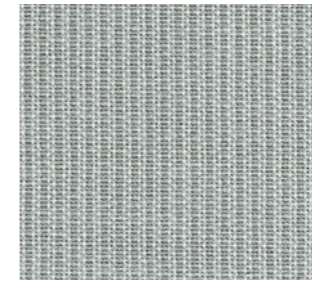
S15 178 - red



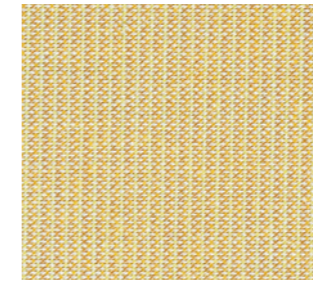
S15 179 - green



S15 180 - blue



S15 181 - grey



S15 182 - yellow

Mat-F_MF_EN - 12.12.2008 - www.vs-furniture.com

MATERIALS**LIGNOpal, Group F (veneers).**

Top surfaces. For the production of tables and panels for the bodies of clad furniture such as cupboards and sideboards, LIGNOpal three-layer quality fine chipboard E1 (DIN EN 312) is used. The panels are laminated with **real wood veneers** which after cutting to size and sanding are given several coats of clear varnish or stained and varnished. Only water-based varnishes are used.

Important note. Material and colour charts produced by offset printing can deviate slightly from the original and the colours are not necessarily exactly true. The same applies to ink-jet or laser prints from PDF files.

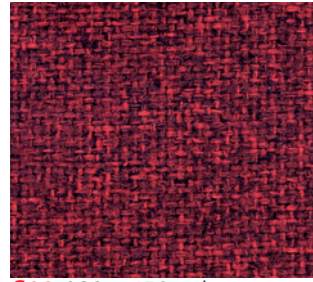
Mat-S15_MF_EN - 16.12.2007 - www.vs-furniture.com

MATERIALS**Fabrics, Group S15, Unique.**

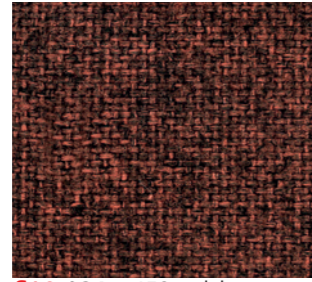
Fabrics for **Series 2000 screens**. In addition to the choice of colour and pattern, the other technical characteristics such as weight and fire and wear resistance should be considered.

100% dralon | **Weight** 188 g/lin.m | **Abrasion test** Martindale 18,000 passages, DIN 53863 Part 4 | **Pilling** 4 (Scale 1-5) SNV 198525 | **Light fastness** 6-7 (Scale 1-8) ISO 105-B02 | **Fastness to rubbing** dry 4, wet 3-4 (Scale 1-5) ISO 105-X12 | **Water-repellent equipment** | 30°C mild wash cycle | Dry cleaning.

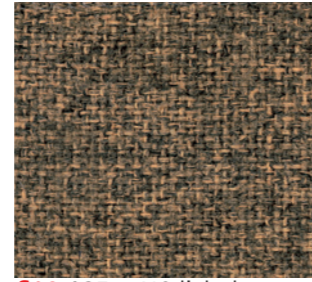
Important note. Material and colour charts produced by offset printing can deviate slightly from the original and the colours are not necessarily exactly true. The same applies to ink-jet or laser prints from PDF files.



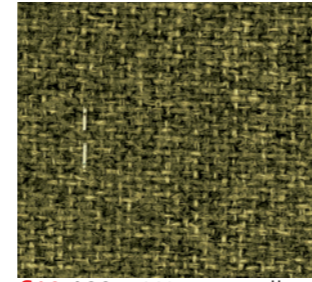
S16 183 - 456 red



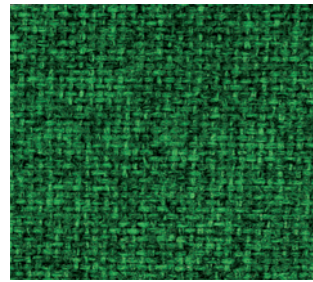
S16 184 - 458 red-brown



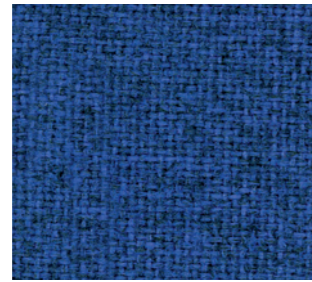
S16 185 - 413 light brown



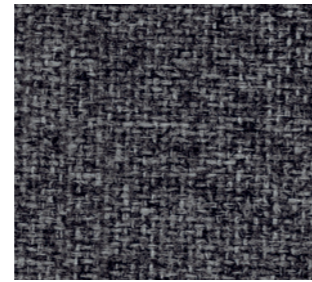
S16 186 - 441 green-yellow



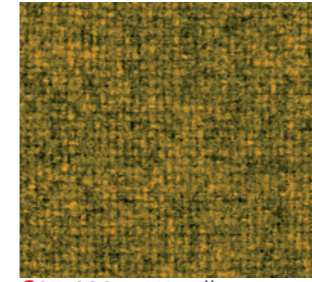
S16 187 - 426 green



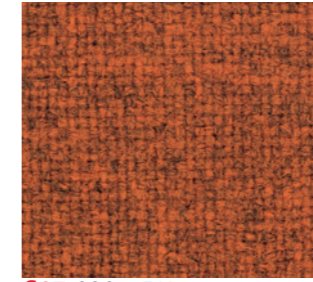
S16 188 - 436 blue



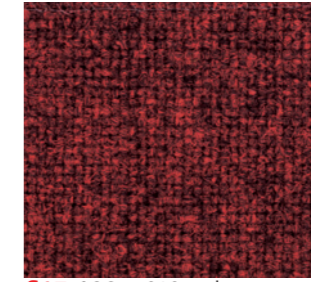
S16 198 - 463 grey



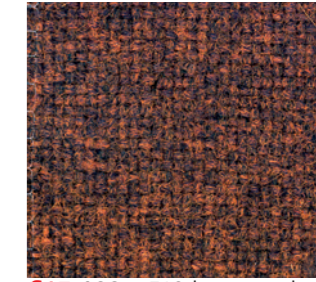
S17 190 - 411 yellow



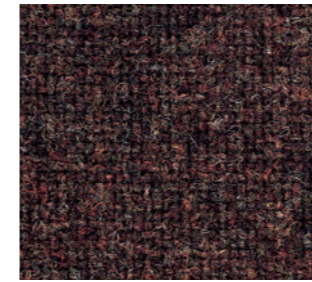
S17 191 - 511 orange



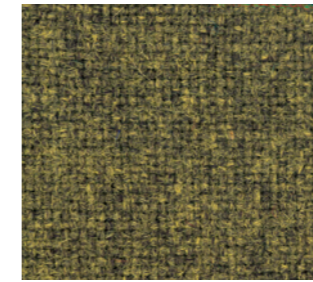
S17 192 - 612 red



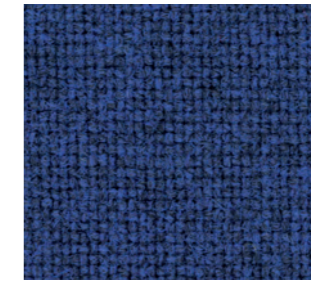
S17 193 - 512 brown-red



S17 194 - 272 brown



S17 195 - 412 green



S17 196 - 732 blue



S17 197 - 192 black

Mat-S16_MF_EN - 16.12.2007 - www.vs-furniture.com

MATERIALS**Fabrics, Group S16, Merano.**

Upholstery and seat covers. Fabrics are predominantly used for seat covers. In addition to the choice of colour and pattern, the other technical characteristics such as weight and fire and wear resistance should be considered.

100% Trevira CS | Weight 410 g/lin.m | Flame retardant | Fire-protection standard DIN 4102 B1 | Abrasion test Martindale 45,000 passages, DIN EN ISO 12947-2 | Pilling 4 (Scale 1-5) DIN EN ISO 12945-2 | Light fastness 6-7 (Scale 1-8) DIN EN ISO 105-B02 | Fastness to rubbing dry 4, wet 4 (Scale 1-5) ISO 105-X12 | 30°C mild wash cycle | Dry cleaning.

Important note. Material and colour charts produced by offset printing can deviate slightly from the original and the colours are not necessarily exactly true. The same applies to ink-jet or laser prints from PDF files.

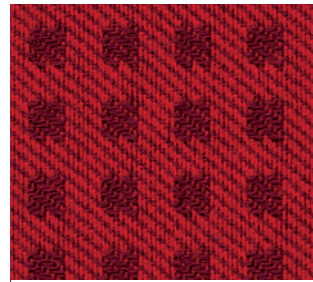
Mat-S17_MF_EN - 16.12.2007 - www.vs-furniture.com

MATERIALS**Fabrics, Group S17, Tonica.**

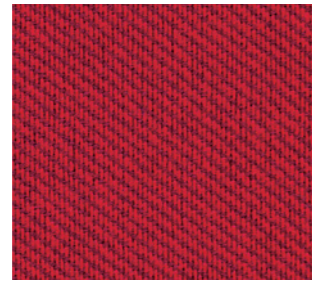
Upholstery and seat covers. Fabrics are predominantly used for seat covers. In addition to the choice of colour and pattern, the other technical characteristics such as weight and fire and wear resistance should be considered.

100% shear wool | Weight 700 g/lin.m | Fire-protection standards EN 1021 Parts 1+2 | Abrasion test Martindale 45,000 passages, EN ISO 12947 | Pilling 4-5 (Scale 1-5) | Light fastness 6 (Scale 1-8) EN ISO 105-B02 | Fastness to rubbing 4 (Scale 1-5) EN ISO 105-X12 | Dry cleaning | Differences in colour may occur.

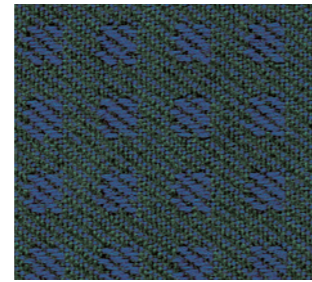
Important note. Material and colour charts produced by offset printing can deviate slightly from the original and the colours are not necessarily exactly true. The same applies to ink-jet or laser prints from PDF files.



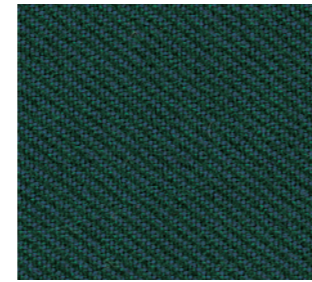
S22 817 - N013 red Et dark red



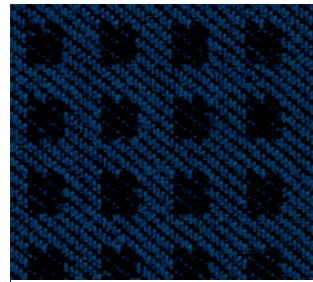
S22 813 - N003 red



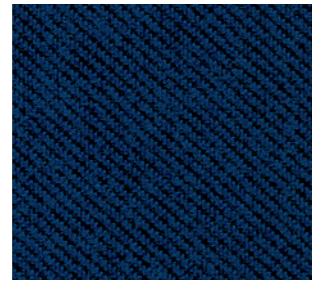
S22 818 - N014 green Et blue



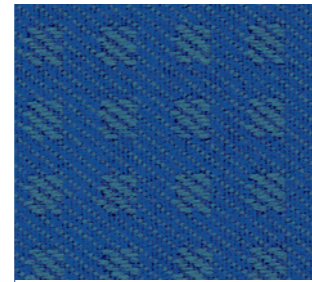
S22 814 - N004 green



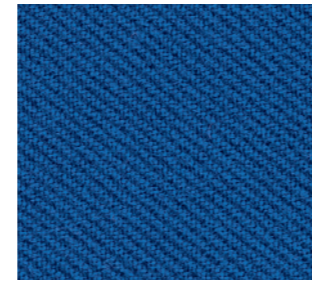
S22 816 - N012 dark blue Et black



S22 811 - N002 dark blue



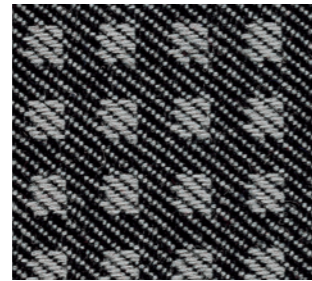
S22 819 - N032 royal blue Et green



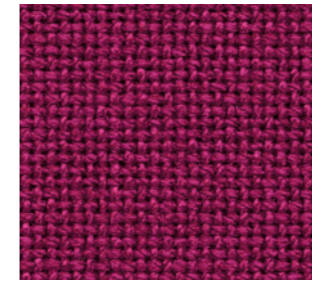
S22 812 - N022 royal blue



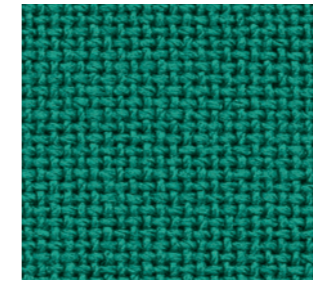
S22 810 - N001 black



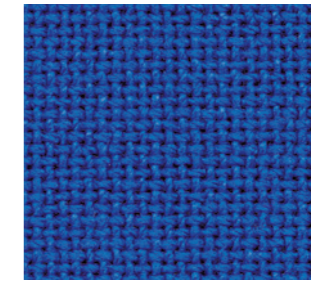
S22 815 - N011 black Et white



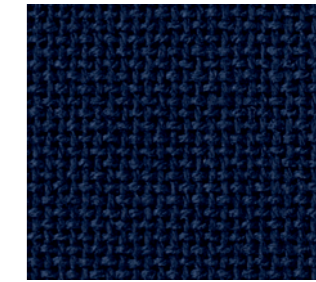
S23 804 - 223 red



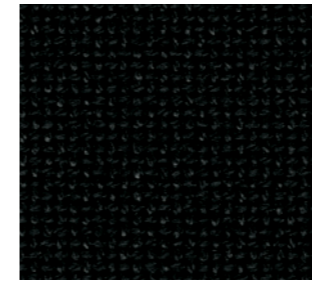
S23 803 - 234 green



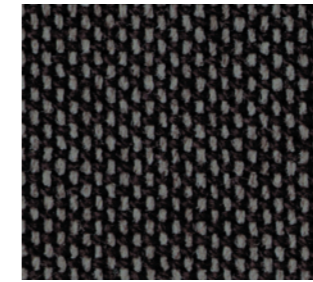
S23 802 - 232 royal blue



S23 801 - 222 grey-blue



S23 800 - 201 black



S23 805 - 241 black-grey

Mat-S22_MF_EN - 12.12.2008 - www.vs-furniture.com

MATERIALS**Fabrics, Group S22, Nora.**

Upholstery and seat covers. Fabrics are predominantly used for seat covers. In addition to the choice of colour and pattern, the other technical characteristics such as weight and fire and wear resistance should be considered.

100% polyester | Weight 340 g/lin.m | **Fire-protection standards** EN 1021 Parts 1+2 | **Abrasion test** Martindale 50,000 passages, EN ISO 12947 | **Pilling** 5 (Scale 1-5) | **Light fastness** 6 (Scale 1-8) EN ISO 105-B02 | **Fastness to rubbing** 4 (Scale 1-5) EN ISO 105-X12.

Important note. Material and colour charts produced by offset printing can deviate slightly from the original and the colours are not necessarily exactly true. The same applies to ink-jet or laser prints from PDF files.

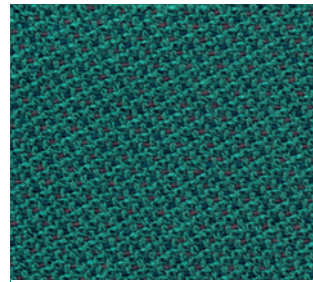
Mat-S23_MF_EN - 16.12.2007 - www.vs-furniture.com

MATERIALS**Fabrics, Group S23, Garant.**

Upholstery and seat covers. Fabrics are predominantly used for seat covers. In addition to the choice of colour and pattern, the other technical characteristics such as weight and fire and wear resistance should be considered.

100% polacrylic | Weight 570 g/lin.m | **Fire-protection standard** EN 1021 Part 1 | **Abrasion test** Martindale 30,000 passages, EN ISO 12947 | **Pilling** 4 (Scale 1-5) | **Light fastness** 5-7 (Scale 1-8) EN ISO 105-B02 | **Fastness to rubbing** 4-5 (Scale 1-5) EN ISO 105-X12.

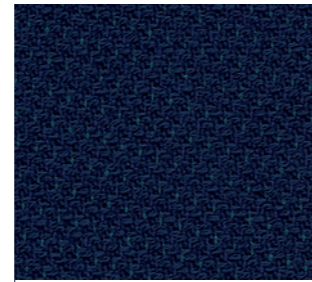
Important note. Material and colour charts produced by offset printing can deviate slightly from the original and the colours are not necessarily exactly true. The same applies to ink-jet or laser prints from PDF files.



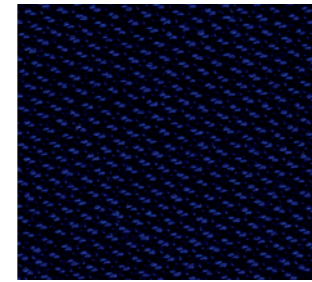
S24 826 - 6814 variegated green



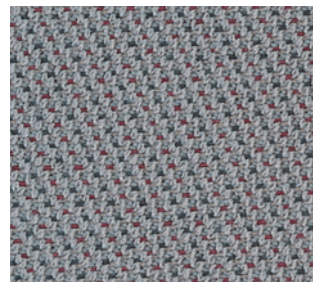
S24 822 - 6812 dark blue



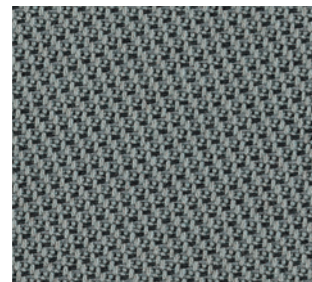
S24 827 - 6822 variegated dark blue



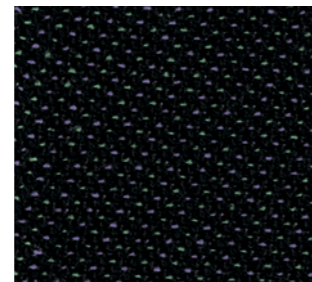
S24 821 - 6802 black & blue



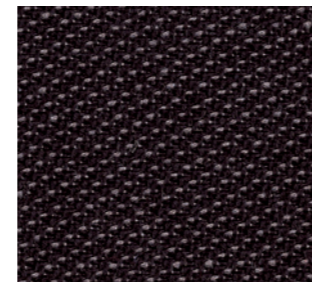
S24 829 - 6841 variegated grey



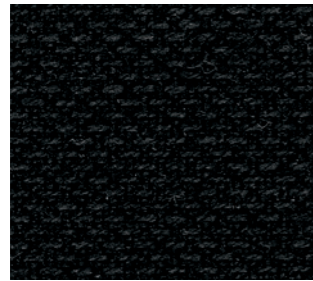
S24 825 - 6811 grey & black



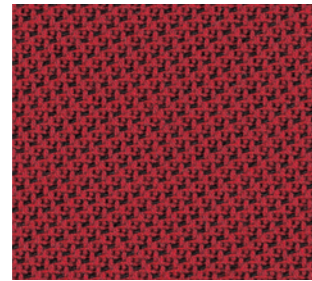
S24 828 - 6831 variegated black



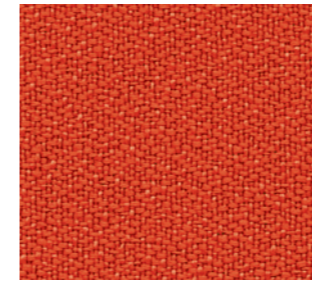
S24 823 - 6801 black & grey



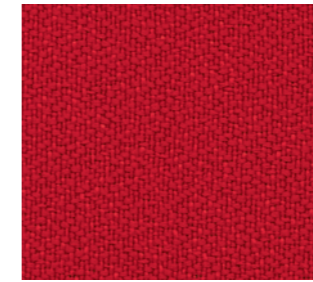
S24 820 - 6821 black



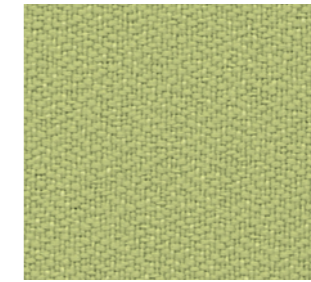
S24 824 - 6803 red & black



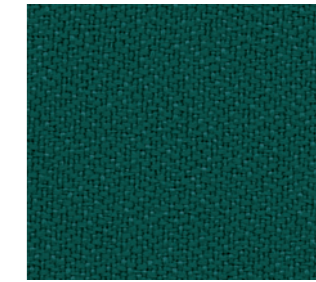
S25 937 - 5816 orange



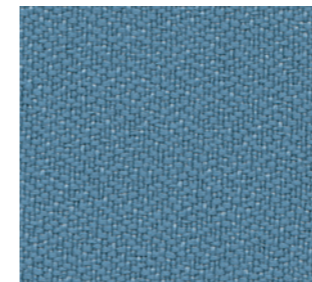
S25 837 - 5807 red



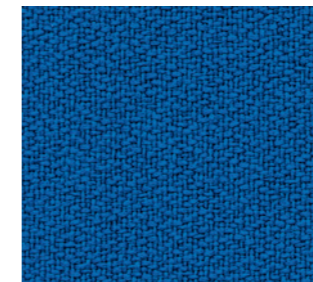
S25 835 - 5809 yellow-green



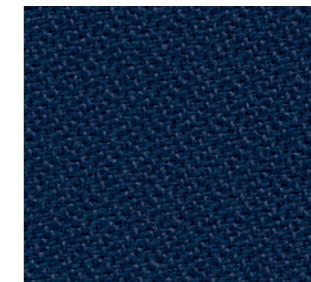
S25 916 - 6068 dark green



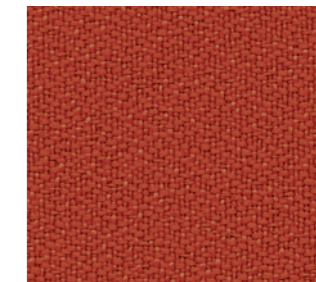
S25 834 - 5808 light blue



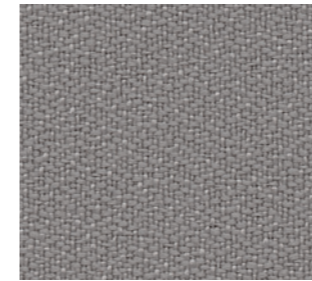
S25 915 - 6062 blue



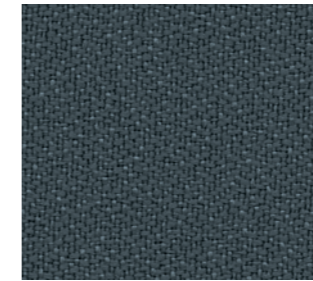
S25 833 - 6015 black-blue



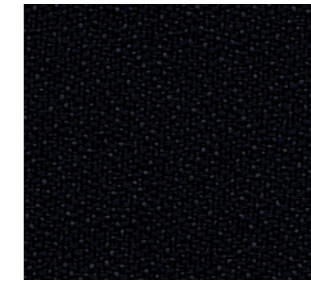
S25 938 - 5815 rust



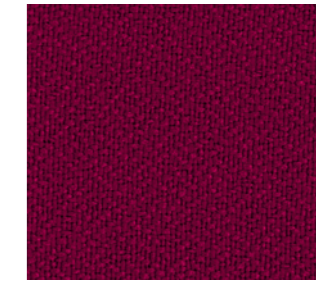
S25 832 - 5802 light grey



S25 831 - 5801 dark grey



S25 830 - 5800 black



S25 839 - 6040 dark red

Mat-S24_MF_EN - 16.12.2007 - www.vs-furniture.com

MATERIALS

Fabrics, Group S24, Duotec.

Upholstery and seat covers. Fabrics are predominantly used for seat covers. In addition to the choice of colour and pattern, the other technical characteristics such as weight and fire and wear resistance should be considered.

97% polyacrylic, 3% lycra | Weight 500 g/lin.m | Fire-protection standard EN 1021 Part 1 | Abrasion test Martindale 30,000 passages, EN ISO 12947 | Pilling 4-5 (Scale 1-5) | Light fastness 5 (Scale 1-8) EN ISO 105-B02 | Fastness to rubbing 4-5 (Scale 1-5) EN ISO 105-X12.

Important note. Material and colour charts produced by offset printing can deviate slightly from the original and the colours are not necessarily exactly true. The same applies to ink-jet or laser prints from PDF files.

Mat-S25_MF_EN - 12.12.2008 - www.vs-furniture.com

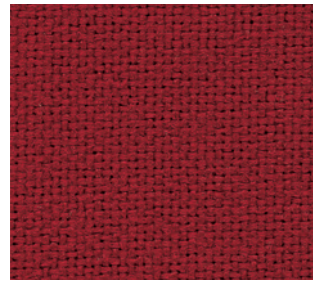
MATERIALS

Fabrics, Group S25, Lucia.

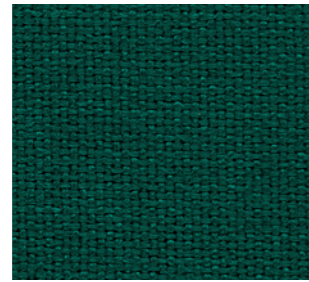
Upholstery and seat covers. Fabrics are predominantly used for seat covers. In addition to the choice of colour and pattern, the other technical characteristics such as weight and fire and wear resistance should be considered.

100% polyester | Weight 400 g/lin.m | Fire-protection standards EN 1021 Parts 1+2 | Abrasion test Martindale 100,000 passages, EN ISO 12947 | Pilling 5 (Scale 1-5) | Light fastness 6 (Scale 1-8) EN ISO 105-B02 | Fastness to rubbing 4 (Scale 1-5) EN ISO 105-X12.

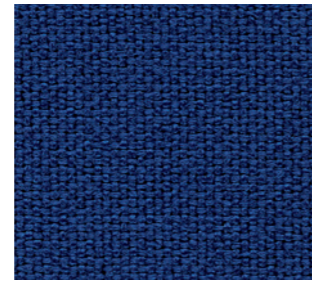
Important note. Material and colour charts produced by offset printing can deviate slightly from the original and the colours are not necessarily exactly true. The same applies to ink-jet or laser prints from PDF files.



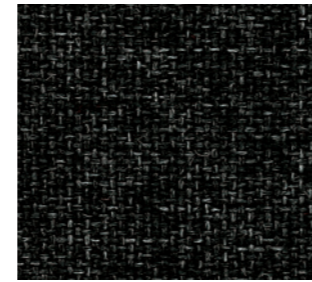
S26 922 - CI13 dark red



S26 920 - CI04 dark green



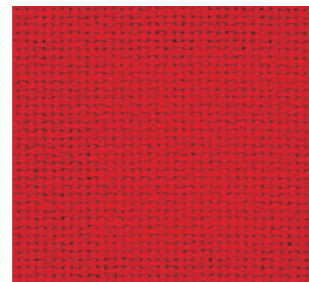
S26 918 - CI02 blue



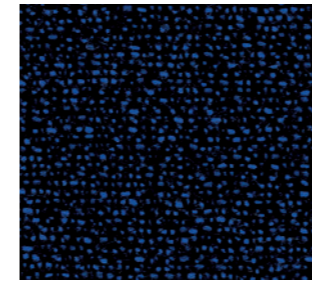
S26 921 - CI11 variegated grey



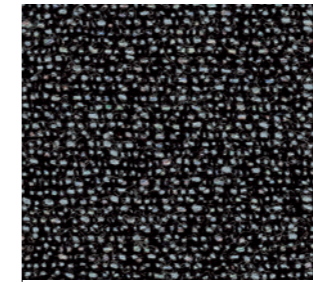
S26 917 - CI01 black



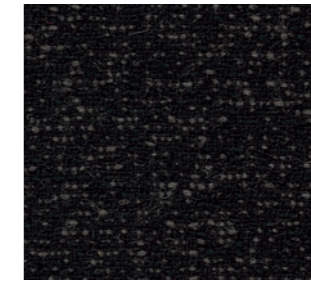
S26 919 - C 03 red



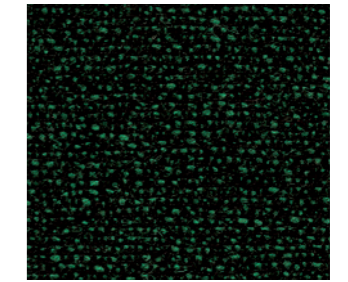
S28 841 - GE02 black & blue



S28 843 - GE11 black & white



S28 840 - GE01 black & grey



S28 842 - GE04 black & green

Mat-S26_MF_EN - 16.12.2007 - www.vs-furniture.com

MATERIALS**Fabrics, Group S26, Citadel.**

Upholstery and seat covers. Fabrics are predominantly used for seat covers. In addition to the choice of colour and pattern, the other technical characteristics such as weight and fire and wear resistance should be considered.

100% Perfortex | **Weight** 320 g/lin.m | **Flame retardant** | **Fire-protection standards** EN 1021 Parts 1+2, DIN 4102 Part 1; B1 | **Abrasion test** Martindale 50,000 passages, EN ISO 12947 | **Pilling** 4 (Scale 1-5) | **Light fastness** 6 (Scale 1-8) EN ISO 105-B02 | **Fastness to rubbing** 4 (Scale 1-5) EN ISO 105-X12.

Important note. Material and colour charts produced by offset printing can deviate slightly from the original and the colours are not necessarily exactly true. The same applies to ink-jet or laser prints from PDF files.

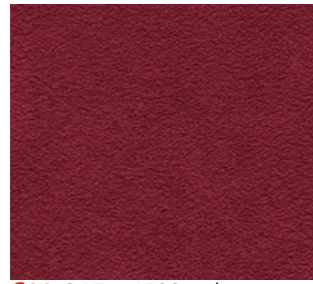
Mat-S28_MF_EN - 12.12.2008 - www.vs-furniture.com

MATERIALS**Fabrics, Group S28, Genius.**

Upholstery and seat covers. Fabrics are predominantly used for seat covers. In addition to the choice of colour and pattern, the other technical characteristics such as weight and fire and wear resistance should be considered.

50% polyamide, 33% shear wool, 10% Visil, 7% viscose | **Weight** 610 g/lin.m | **Fire-protection standards** EN 1021 Parts 1+2 | **Abrasion test** Martindale 500,000 passages, EN ISO 12947 | **Pilling** 5 (Scale 1-5) | **Light fastness** 6 (Scale 1-8) EN ISO 105-B02 | **Fastness to rubbing** 4 (Scale 1-5) EN ISO 105-X12.

Important note. Material and colour charts produced by offset printing can deviate slightly from the original and the colours are not necessarily exactly true. The same applies to ink-jet or laser prints from PDF files.



S29 845 - 4508 red



S29 846 - 4523 dark blue



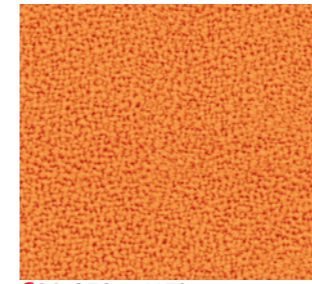
S29 849 - 4540 grey



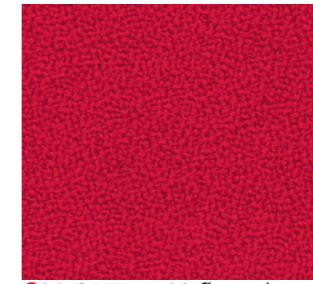
S29 847 - 4524 black



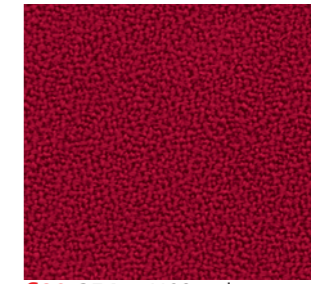
S29 848 - 4537 blue



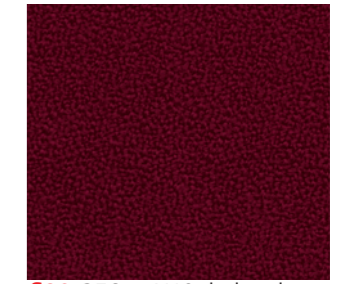
S30 859 - 4170 orange



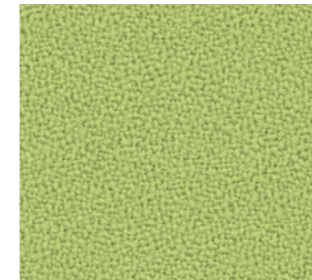
S30 855 - 4108 fire red



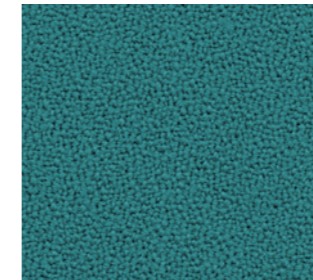
S30 854 - 4109 red



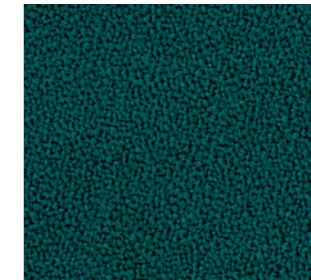
S30 856 - 4112 dark red



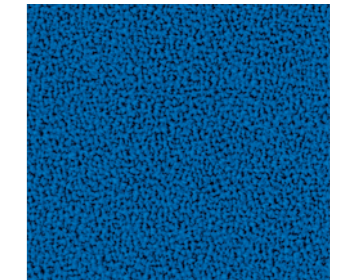
S30 929 - 4171 light green



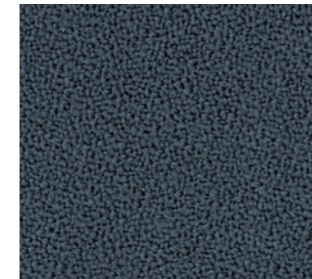
S30 858 - 4121 bluish green



S30 857 - 4120 dark green



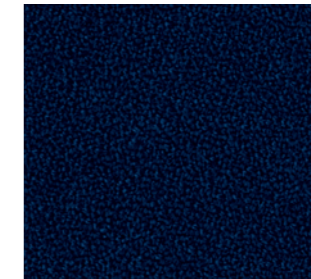
S30 853 - 4115 royal blue



S30 851 - 4101 grey



S30 850 - 4102 black



S30 852 - 4116 black-blue

Mat-S29_MF_EN - 12.12.2008 - www.vs-furniture.com

MATERIALS**Fabrics, Group S29, Stamskin Top.**

Upholstery and seat covers. Fabrics are predominantly used for seat covers. In addition to the choice of colour and pattern, the other technical characteristics such as weight and fire and wear resistance should be considered.

Embossed plastic cover | Weight 1100 g/lin.m | Waterproof | Anti-microbial | Anti-bacterial | Anti-mycotic | **Fire-protection standards** EN 1021 Part 1, DIN 4102 Part 1; B2 | **Abrasion test** Martindale 50,000 passages, EN ISO 12947 | **Light fastness** 6 (Scale 1-8) EN ISO 105-B02 | **Fastness to rubbing** 5 (Scale 1-5) EN ISO 105-X12.

Important note. Material and colour charts produced by offset printing can deviate slightly from the original and the colours are not necessarily exactly true. The same applies to ink-jet or laser prints from PDF files.

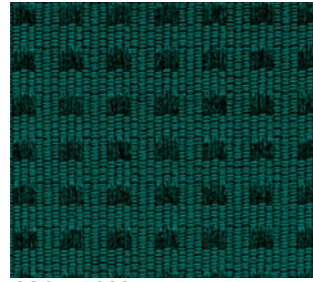
Mat-S30_MF_EN - 12.12.2008 - www.vs-furniture.com

MATERIALS**Fabrics, Group S30, Aquarius.**

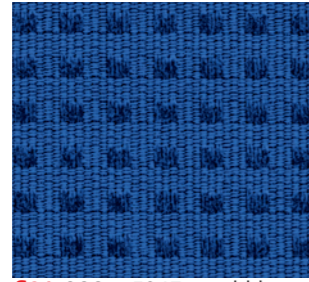
Upholstery and seat covers. Fabrics are predominantly used for seat covers. In addition to the choice of colour and pattern, the other technical characteristics such as weight and fire and wear resistance should be considered.

100% shear wool | Weight 520 g/lin.m | **Fire-protection standards** EN 1021 Parts 1+2, DIN 4102 Part 1; B2 | **Abrasion test** Martindale 50,000 passages, EN ISO 12947 | **Pilling** 4-5 (Scale 1-5) | **Light fastness** 5 (Scale 1-8) EN ISO 105-B02 | **Fastness to rubbing** 4 (Scale 1-5) EN ISO 105-X12.

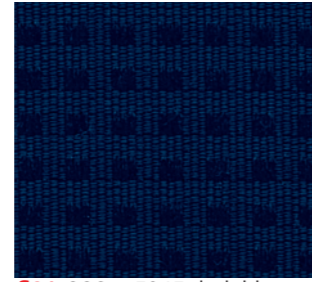
Important note. Material and colour charts produced by offset printing can deviate slightly from the original and the colours are not necessarily exactly true. The same applies to ink-jet or laser prints from PDF files.



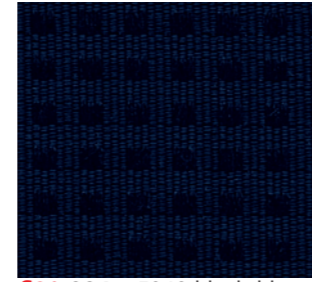
930 - 5939 green



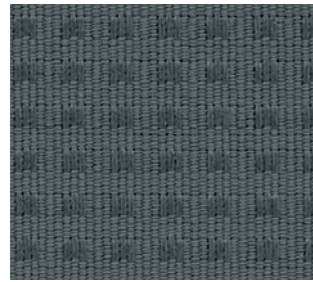
S31 933 - 5947 royal blue



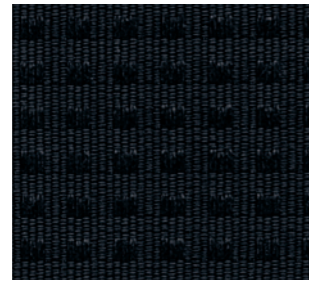
S31 932 - 5945 dark blue



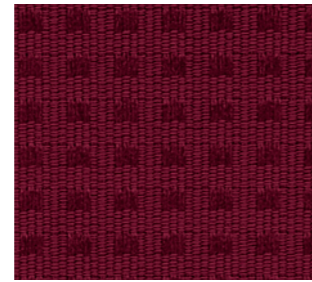
S31 934 - 5948 black-blue



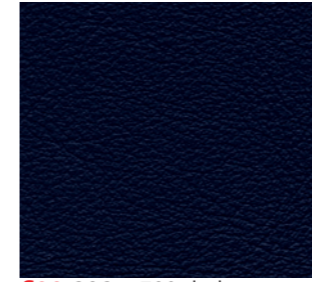
S31 931 - 5942 grey



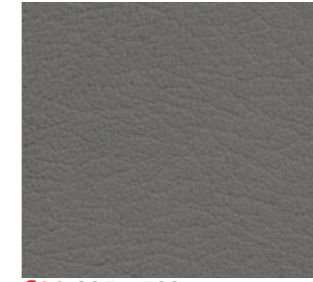
S31 936 - 5981 black



S31 935 - 5952 red



S36 898 - 782 dark grey



S36 897 - 786 grey



S36 899 - 781 black

Mat-S31_MF_EN - 16.12.2007 - www.vs-furniture.com

MATERIALS**Fabrics, Group S31, Palco.**

Upholstery and seat covers. Fabrics are predominantly used for seat covers. In addition to the choice of colour and pattern, the other technical characteristics such as weight and fire and wear resistance should be considered.

100% Trevira CS | **Weight** 430 g/lin.m | **Flame retardant** | **Fire-protection standards** EN 1021 Parts 1+2, DIN 4102 Part 1; B1 | **Abrasion test** Martindale 30,000 passages, EN ISO 12947 | **Pilling** 5 (Scale 1-5) | **Light fastness** 6 (Scale 1-8) EN ISO 105-B02 | **Fastness to rubbing** 4 (Scale 1-5) EN ISO 105-X12.

Important note. Material and colour charts produced by offset printing can deviate slightly from the original and the colours are not necessarily exactly true. The same applies to ink-jet or laser prints from PDF files.

Mat-S36_MF_EN - 16.12.2007 - www.vs-furniture.com

MATERIALS**Fabrics, Group S36, Nappa Cowhide.**

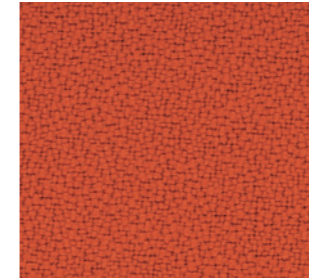
Upholstery and seat covers. Fabrics are predominantly used for seat covers. In addition to the choice of colour and pattern, the other technical characteristics such as weight and fire and wear resistance should be considered.

Imbued leather quality | **Fire-protection standards** EN 1021 Parts 1+2 | **Easy to clean** | **Occasional wiping** with dry or damp cloth is sufficient.

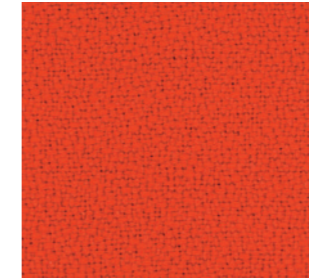
Important note. Material and colour charts produced by offset printing can deviate slightly from the original and the colours are not necessarily exactly true. The same applies to ink-jet or laser prints from PDF files.



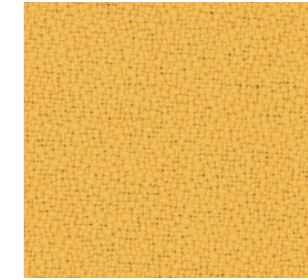
S37 900 - 1751 black



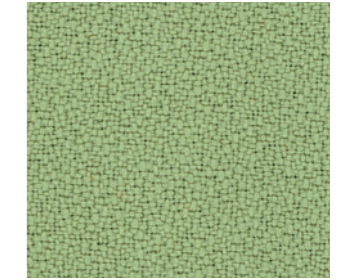
S38 003 - rust red



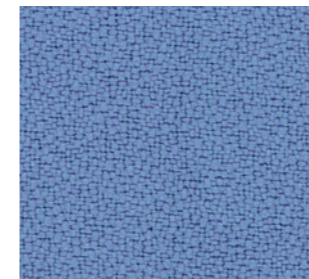
S38 002 - red



S38 001 - yellow



S38 004 - green



S38 005 - blue

Mat-S37_MF_EN - 16.12.2007 - www.vs-furniture.com

MATERIALS**Fabrics, Group S37, Exclusive Leather.**

Upholstery and seat covers. Fabrics are predominantly used for seat covers. In addition to the choice of colour and pattern, the other technical characteristics such as weight and fire and wear resistance should be considered.

Leather | Fire-protection standards EN 1021 Parts 1+2 | Easy to clean | Occasional wiping with dry or damp cloth is sufficient | Conforms to the standards of the German upholstered-furniture industry.

Important note. Material and colour charts produced by offset printing can deviate slightly from the original and the colours are not necessarily exactly true. The same applies to ink-jet or laser prints from PDF files.

Mat-S38_MF_EN - 16.12.2007 - www.vs-furniture.com

MATERIALS**Fabrics, Group S38, Event.**

Fabrics for **seat and couch element series.** In addition to the choice of colour and pattern, the other technical characteristics such as weight and fire and wear resistance should be considered.

100% polyester | Weight 420 g/lin.m | **Fire-protection standards** EN ISO 1021 Parts 1+2 | **Abrasion test** Martindale > 100,000 passages, EN ISO 12947-2 | **Light fastness** >5 (Scale 1-8) BS ISO 105-B02, met.2 | **Fastness to rubbing** dry 4-5, wet 4 (Scale 1-5) ISO 105-X12 | Washable at 60°C | Dry cleaning.

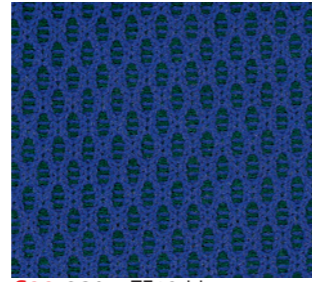
Important note. Material and colour charts produced by offset printing can deviate slightly from the original and the colours are not necessarily exactly true. The same applies to ink-jet or laser prints from PDF files.



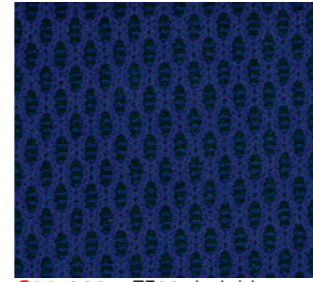
S39 979 - TE03 orange



S39 980 - TE13 red



S39 981 - TE12 blue



S39 982 - TE02 dark blue



S39 983 - TE11 grey



S39 984 - TE01 black



S40 985 - 7477 yellow



S40 986 - 7479 red



S40 987 - 7485 green



S40 988 - 7459 blue



S40 989 - 7445 grey

Mat-S39_MF_EN - 12.12.2008 - www.vs-furniture.com

MATERIALS**Fabrics, Group S39, Tec.**

Upholstery and seat covers. Fabrics are predominantly used for seat covers. In addition to the choice of colour and pattern, the other technical characteristics such as weight and fire and wear resistance should be considered.

100% **Polyester** | **weight** 230 g/lin.m. | **Fire-protection standard** EN 1021 Teil 1 | **Abrasion test** Martindale 30.000 passages, EN ISO 12947 | **Pilling** 5 (Scale 1-5) | **Light fastness** 5 (Scale 1-8) EN ISO 105-B02 | **Fastness to rubbing** 4-5 (Scale 1-5) EN ISO 105-X12.

Important note. Material and colour charts produced by offset printing can deviate slightly from the original and the colours are not necessarily exactly true. The same applies to ink-jet or laser prints from PDF files.

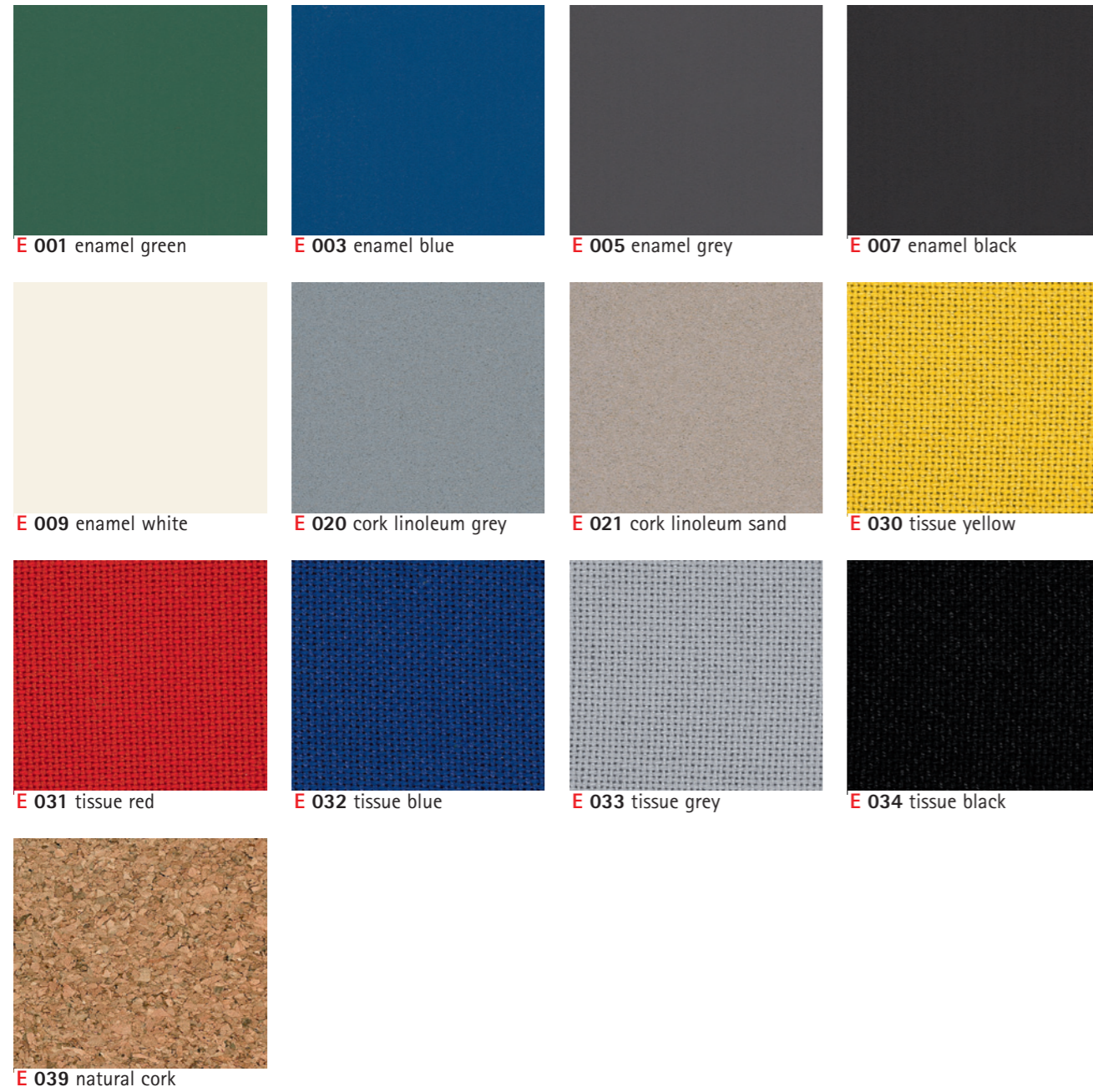
Mat-S40_MF_EN - 12.12.2008 - www.vs-furniture.com

MATERIALS**Fabrics, Group S40, Stamskin Top.**

Upholstery and seat covers. Fabrics are predominantly used for seat covers. In addition to the choice of colour and pattern, the other technical characteristics such as weight and fire and wear resistance should be considered.

Embossed plastic cover | **Weight** 1100 g/lin.m | **Waterproof** | **Anti-microbial** | **Anti-bacterial** | **Anti-mycotic** | **Fire-protection standards** EN 1021 Part 1, DIN 4102 Part 1; B2 | **Abrasion test** Martindale 50,000 passages, EN ISO 12947 | **Light fastness** 6 (Scale 1-8) EN ISO 105-B02 | **Fastness to rubbing** 5 (Scale 1-5) EN ISO 105-X12.

Important note. Material and colour charts produced by offset printing can deviate slightly from the original and the colours are not necessarily exactly true. The same applies to ink-jet or laser prints from PDF files.

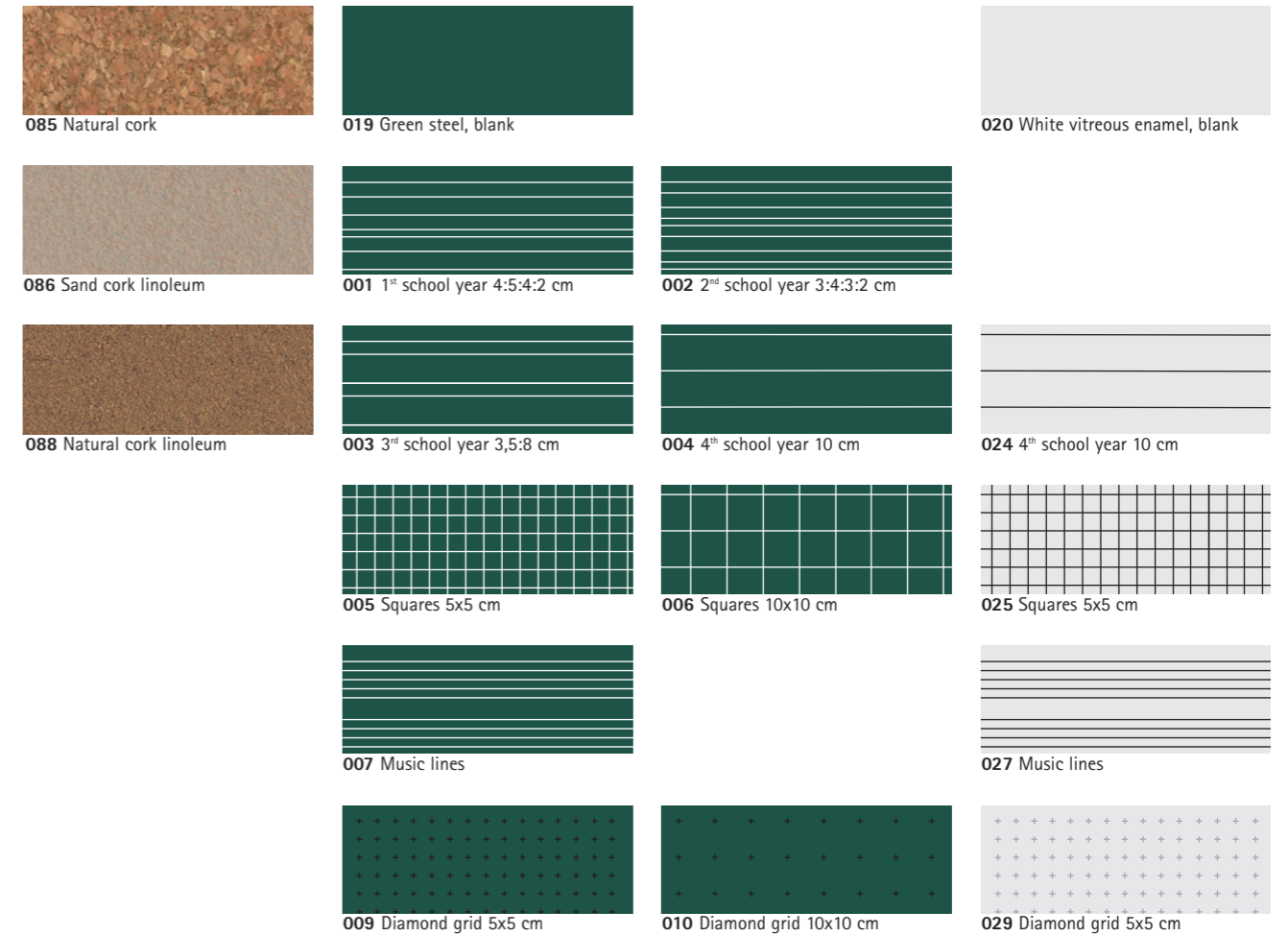


Mat-TafelMediaPro_MF_DE - 12.12.2008 - www.vs-furniture.com

MATERIALIEN

MediaPro board surfaces.

MediaPro board elements are available with steel-enamel-, cork-linoleum, fabric and natural-cork coating. The steel-enamel coating is baked in a special process at high temperature. The colour steel-enamel surfaces can be written on with chalk, while the white steel-enamel surfaces can be written on with board markers. All steel-enamel surfaces are magnetically adherent. There is a choice of cork linoleum, fabric and natural cork for use as pinnable surfaces.



Mat-Tafel_MF_EN - 12.12.2008 - www.vs-furniture.com

MATERIALS

Board surfaces.

Steel sheet lineation E1 (green) for all specially-coated writing surfaces. The vitreous-enamel coating is stoved at a high temperature by a special process. The surfaces can be written on with chalk and magnets adhere to them.

Steel sheet lineation E2 (white) for all specially-coated writing surfaces of up to a width of 300 cm and a height of 120 cm. The vitreous-enamel coating is stoved at a high temperature by a special process. The surfaces can be written on with Board markers and magnets adhere to them.